



HEAT TRANSFER SOLUTIONS
 PO BOX 171
 HIGH RIDGE, MO 63049
 T: 636.677.6600 F: 636.677.1203

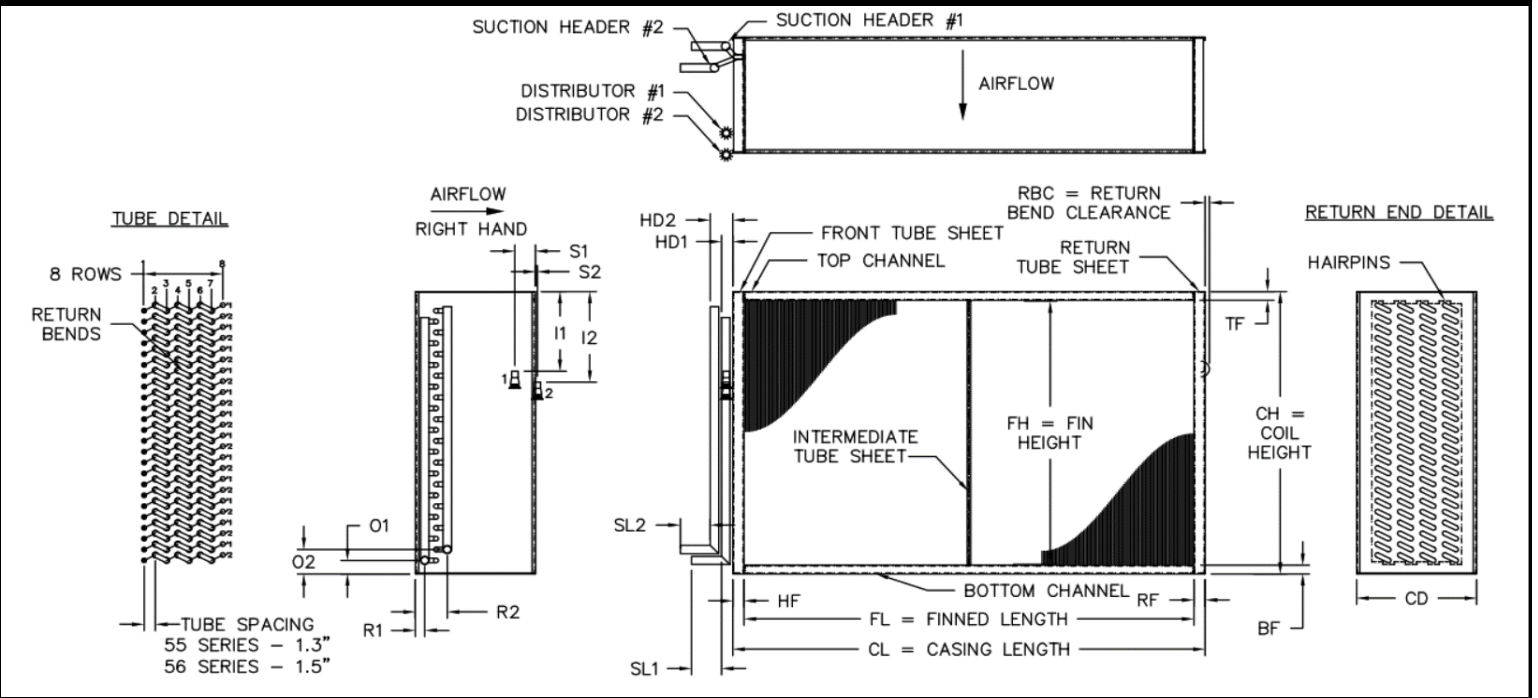
www.marlocoil.com

PROJECT: _____
TAG #: _____
QTY: _____
NOTES: _____

Please complete as much information as possible.

Replacement Coil Order Form

Refrigerant/DX/Evaporator Coil (Same End Connections)



FINS		CASING							HD1	HD2	SUCTION HEADER CONNECTION(S)					RBC
FH	FL	BF	TF	CH	HF	RF	CL	CD			SL	O1	O2	R1	R2	

DISTRIBUTOR(S)				PERFORMANCE R-(22, 134a, 404a, 407c, 410a, _____)								# DIST CIRCUIT
I1	I2	S1	S2	INLET Ø		TONNAGE		EAT [DB°F/WB°F]		SUCTION T°F		

ROWS	TUBE DIAMETER	(3/8" 1/2" 5/8" 1" _____)					FIN MATERIAL					
TUBES HIGH		TUBE MATERIAL					ALUM	(.008	.010	.016	.020	.025)
QTY TUBES INTO SUCTION HDR	COPPER	(.025	.028	.035	.049	.065)	COPPER:	(.007	.010	.016	.020	.025)
FIN TYPE (FLAT or TURBEX)	STEEL	(.035	.049	.065)	STEEL:	(.010	.016)					
FINS PER INCH SPACING	SST	(.035	.049)	SST:	(.008	.010)						
AIRFLOW DIRECTION (H or V)	CU/NI	(.035	.049)	CU/NI:	(.007	.010)						
COIL HAND (RIGHT or LEFT)	ALUM	(.049	.065	.083)	CASING		(Galvanized	304L SST	316L SST)			
SUCTION HEADER/CONN Ø	HEADER MATERIAL/THICKNESS		(Copper M/L/K	Sch 40/80 Steel	Sch 40/80 304/316 SST)							
QTY INTERMEDIATE TUBE SHEETS	SUCTION CONN MAT & TYPE		(Copper	Brass	Steel	SST)	(MPT	FPT	Plain End	Flanged)		
	COATING		(Phenolic	Electrofin)	PRIORITY SHIPMENT	(10 day	15 day)					

OPTIONS (check in box)	COIL HAND CONFIGURATION	CONTROL OPTIONS
Header Wrap		
Duct Mounting Holes		
Removable Channels		
Copper Ferrules		
Integral Drain Pan		
Lifting Lugs (Bolted)		
Lifting Lugs (Welded)		
Hot Gas Bypass		