



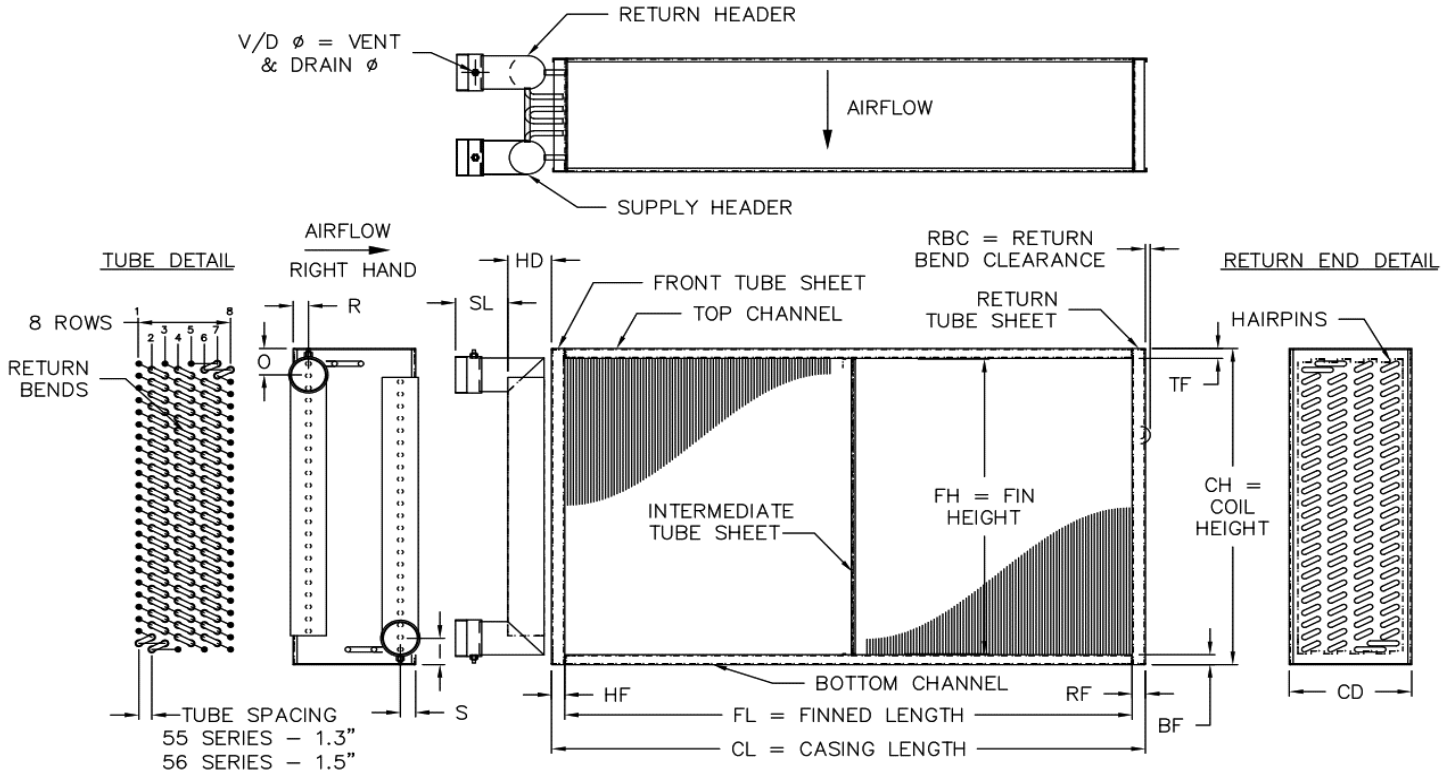
HEAT TRANSFER SOLUTIONS
 PO BOX 171
 HIGH RIDGE, MO 63049
 T: 636.677.6600 F: 636.677.1203
www.marlocoil.com

PROJECT: _____
TAG #: _____
QTY: _____
NOTES: _____

Please complete as much information as possible.

Replacement Coil Order Form

Water Coil (Multi-Row, Same End Connections)



FINS		CASING							HD	CONNECTIONS					RBC	V/D Ø
FH	FL	BF	TF	CH	HF	RF	CL	CD		SL	S	O	I	R		
ROWS		TUBE DIAMETER		(5/8" 1" _____)		FIN MATERIAL										
TUBES HIGH		TUBE MATERIAL							ALUM					(.008 .010 .016 .020 .025)		
TUBES ENTERING HEADER		COPPER							COPPER:					(.007 .010 .016 .020 .025)		
FIN TYPE (FLAT or TURBEX)		STEEL							STEEL:					(.010 .016)		
FINS PER INCH SPACING		SST							SST:					(.008 .010)		
AIRFLOW DIRECTION (H or V)		CU/NI							CU/NI:					(.007 .010)		
TUBE ORIENTATION (H or V)		ALUM							CASING					(Galvanized 304L SST 316L SST)		
COIL HAND (RIGHT or LEFT)		HEADER MATERIAL/THICKNESS							(Copper M/L/K		Sch 40/80 Steel		Sch 40/80 304/316 SST)			
CONNECTION SIZE		CONNECTION MAT & TYPE							(Copper Brass Steel SST)			(MPT FPT Plain End Flanged)				
QTY INTERMEDIATE TUBE SHEETS		COATING		(Phenolic Electrofin)		PRIORITY SHIPMENT			(5 day 10 day 15 day)							

OPTIONS (check in box)	COIL HAND CONFIGURATION	VENT/DRAIN CONFIG (sketch)	NOTES
Header Wrap			_____ _____ _____ _____ _____ _____
Duct Mounting Holes			
Removable Channels			
Vertical Tube Orientation			
Integral Drain Pan			
Lifting Lugs (Welded)			
Lifting Lugs (Bolted)			
Copper Ferrules			