



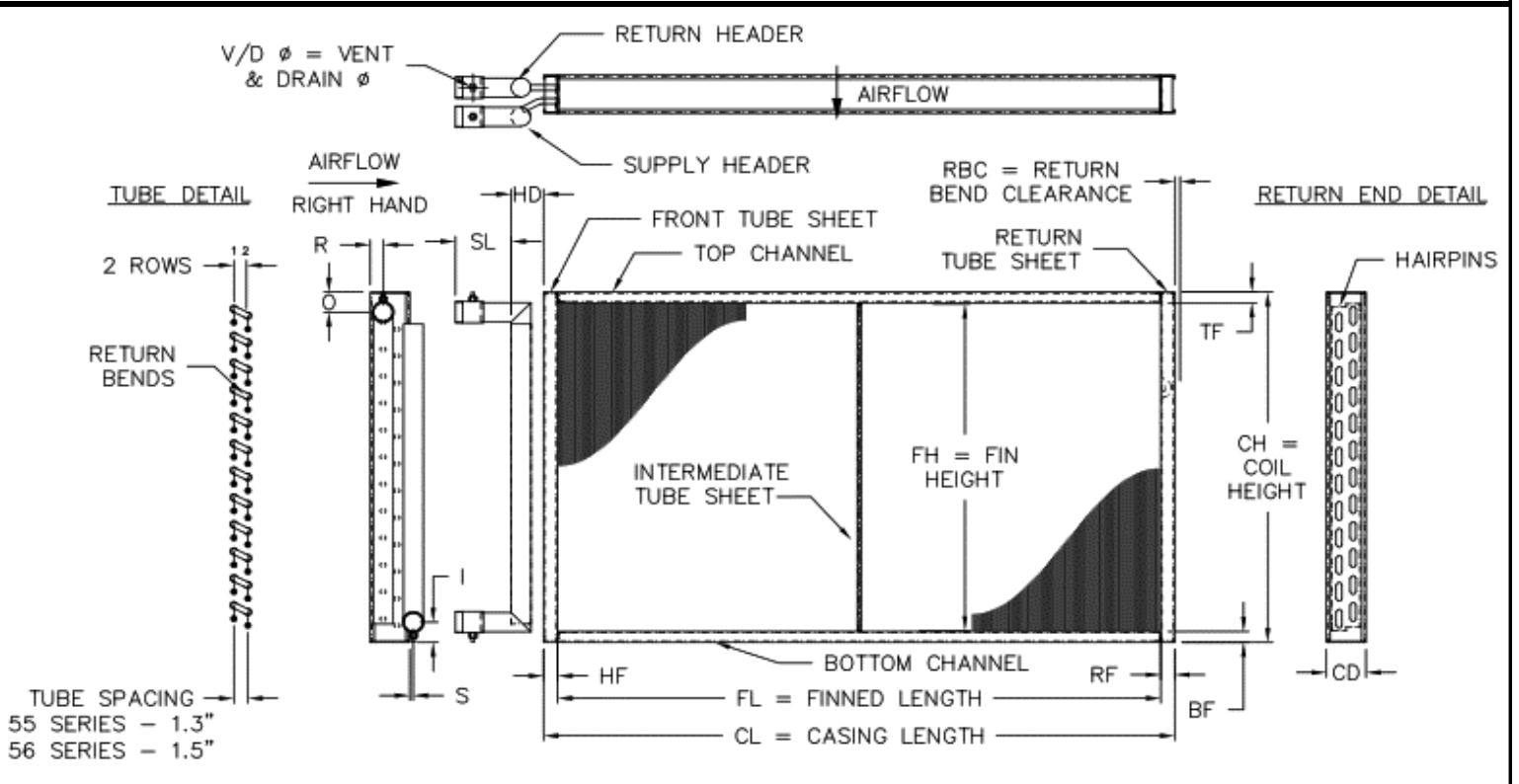
HEAT TRANSFER SOLUTIONS
PO BOX 171
HIGH RIDGE, MO 63049
T: 636.677.6600 F: 636.677.1203
www.marlocoil.com

PROJECT: _____
TAG #: _____
QTY: _____
NOTES: _____

Please complete as much information as possible.

Replacement Coil Order Form

Water Coil (Multi-Row, Swung Header)



FINS		CASING								HD	CONNECTIONS					RBC	V/D Ø			
FH	FL	BF	TF	CH	HF	RF	CL	CD	SL		S	O	I	R						
ROWS				TUBE DIAMETER					(5/8" 1" _____)		FIN MATERIAL									
TUBES HIGH				TUBE MATERIAL					ALUM					(.008 .010 .016 .020 .025)						
TUBES ENTERING HEADER				COPPER					(.025 .028 .035 .049 .065)		COPPER:					(.007 .010 .016 .020 .025)				
FIN TYPE (FLAT or TURBEX)				STEEL					(.035 .049 .065)		STEEL:					(.010 .016)				
FINS PER INCH SPACING				SST					(.035 .049)		SST:					(.008 .010)				
AIRFLOW DIRECTION (H or V)				CU/NI					(.035 .049)		CU/NI:					(.007 .010)				
TUBE ORIENTATION (H or V)				ALUM					(.049 .065 .083)		CASING					(Galvanized 304L SST 316L SST)				
COIL HAND (RIGHT or LEFT)				HEADER MATERIAL/THICKNESS					(Copper M/L/K		Sch 40/80 Steel					Sch 40/80 304/316 SST)				
CONNECTION SIZE				CONNECTION MAT & TYPE					(Copper Brass Steel SST)		(MPT FPT Plain End Flanged)									
QTY INTERMEDIATE TUBE SHEETS				COATING					(Phenolic Electrofin)		PRIORITY SHIPMENT					(5 day 10 day 15 day)				
OPTIONS (check in box)				COIL HAND CONFIGURATION					VENT/DRAIN CONFIG (sketch)					NOTES						
Header Wrap														_____						
Duct Mounting Holes														_____						
Removable Channels														_____						
Vertical Tube Orientation														_____						
Integral Drain Pan														_____						
Lifting Lugs (Welded)														_____						
Lifting Lugs (Bolted)														_____						
Copper Ferrules														_____						