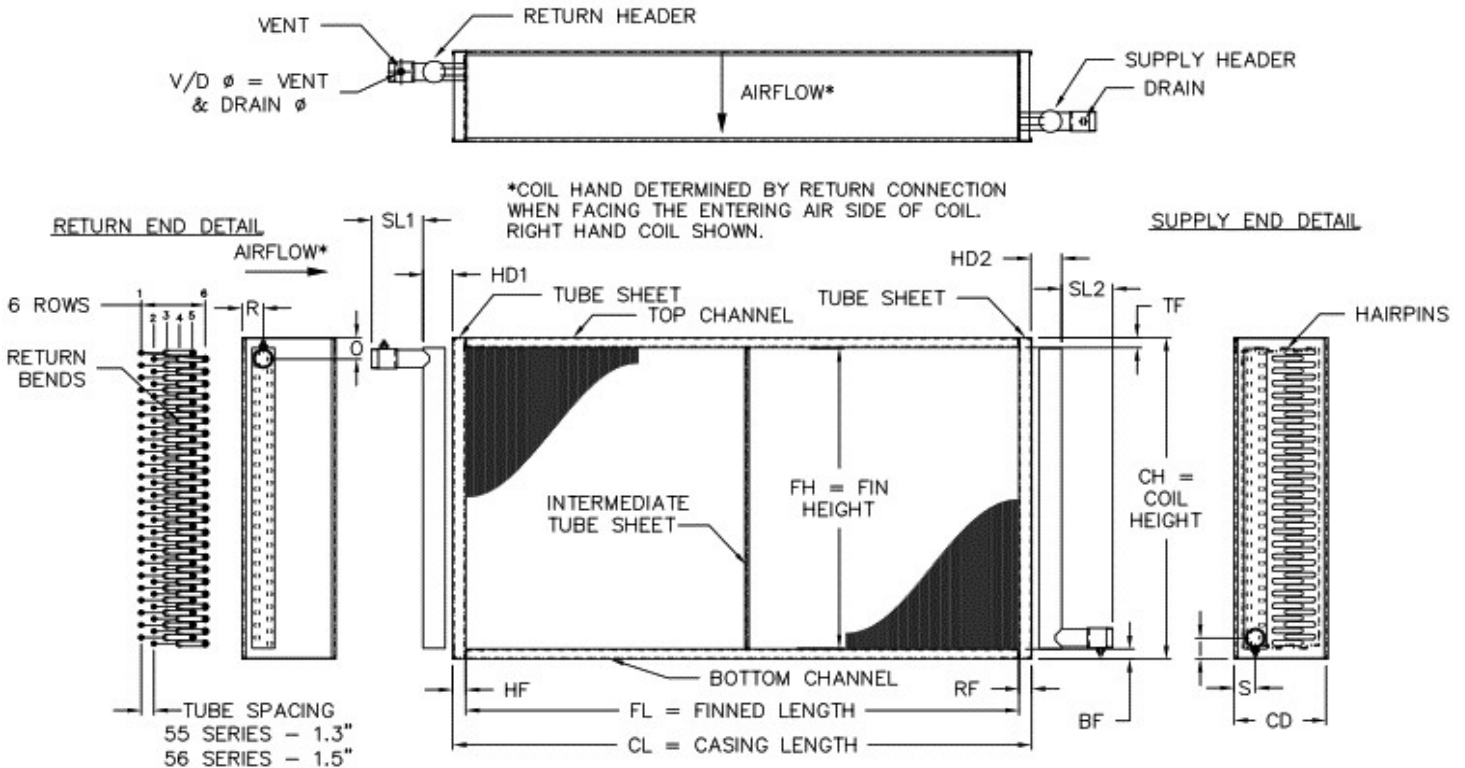


PROJECT:
TAG #:
QTY:
NOTES:

Please complete as much information as possible.

Replacement Coil Order Form **Water Coil (Multi-Row, Opposite End Connections)**



FINNINGS			CASING						HD1/HD2		CONNECTIONS						V/D Ø
FH	FL	BF	TF	CH	HF	RF	CL	CD	SL1	SL2	S	O	I	R			
ROWS			TUBE DIAMETER (5/8" 1" _____)						FIN MATERIAL								
TUBES HIGH			TUBE MATERIAL						ALUM: (.008 .010 .016 .020 .025)								
TUBES ENTERING HEADER			COPPER: (.025 .028 .035 .049 .065)						COPPER: (.007 .010 .016 .020 .025)								
FIN TYPE (FLAT or TURBEX)			STEEL: (.035 .049 .065)						STEEL: (.010 .016)								
FINS PER INCH SPACING			SST: (.035 .049)						SST: (.008 .010)								
AIRFLOW DIRECTION (H or V)			CU/NI: (.035 .049)						CU/NI: (.007 .010)								
TUBE ORIENTATION (H or V)			ALUM: (.049 .065 .083)						CASING (Galvanized 304L SST 316L SST)								
COIL HAND (RIGHT or LEFT)			HEADER MATERIAL/THICKNESS (Copper M/L/K Sch 40/80 Steel Sch 40/80 304/316 SST)														
CONNECTION SIZE			CONNECTION MAT & TYPE (Copper Brass Steel SST)						(MPT FPT Plain End Flanged)								
QTY INTERMEDIATE TUBE SHEETS			COATING (Phenolic Electrofin)						PRIORITY SHIPMENT (5 day 10 day 15 day)								
OPTIONS (check in box)			COIL HAND CONFIGURATION						VENT/DRAIN CONFIG (sketch)						NOTES		
Header Wrap																	
Duct Mounting Holes																	
Removable Channels																	
Vertical Tube Orientation																	
Integral Drain Pan																	
Lifting Lugs (Welded)																	
Lifting Lugs (Bolted)																	
Copper Ferrules																	