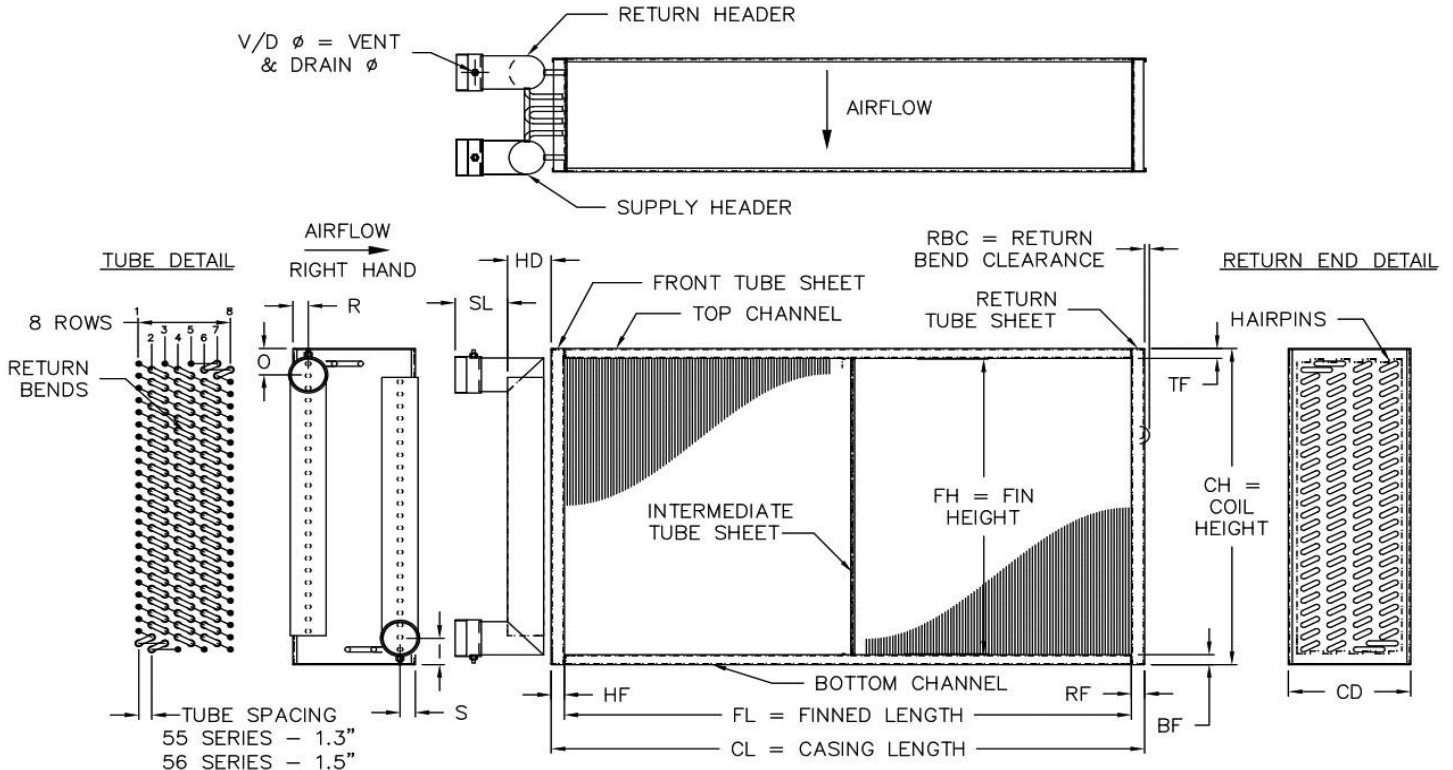


PROJECT:
TAG #:
QTY:
NOTES:

Please complete as much information as possible.

Replacement Coil Order Form

Water Coil (Multi-Row, Same End Connections)



FINNINGS		CASING				HD	CONNECTIONS					RBC	V/D Ø			
FH	FL	BF	TF	CH	HF		RF	CL	CD	SL	S			O	I	R
ROWS		TUBE DIAMETER				(5/8" 1" _____)		FIN MATERIAL								
TUBES HIGH		TUBE MATERIAL				ALUM:		(.008 .010 .016 .020 .025)								
TUBES ENTERING HEADER		COPPER:				(.025 .028 .035 .049 .065)		COPPER:		(.007 .010 .016 .020 .025)						
FIN TYPE (FLAT or TURBEX)		STEEL:				(.035 .049 .065)		STEEL:		(.010 .016)						
FINNINGS PER INCH SPACING		SST:				(.035 .049)		SST:		(.008 .010)						
AIRFLOW DIRECTION (H or V)		CU/NI:				(.035 .049)		CU/NI:		(.007 .010)						
TUBE ORIENTATION (H or V)		ALUM:				(.049 .065 .083)		CASING		(Galvanized 304L SST 316L SST)						
COIL HAND (RIGHT or LEFT)		HEADER MATERIAL/THICKNESS				(Copper M/L/K Sch 40/80 Steel Sch 40/80 304/316 SST)										
CONNECTION SIZE		CONNECTION MAT & TYPE				(Copper Brass Steel SST)		(MPT FPT Plain End Flanged)								
QTY INTERMEDIATE TUBE SHEETS		COATING		(Phenolic Electrofin)		PRIORITY SHIPMENT		(5 day 10 day 15 day)								
OPTIONS (check in box)		COIL HAND CONFIGURATION		VENT/DRAIN CONFIG (sketch)		NOTES										
Header Wrap	<input type="checkbox"/>															
Duct Mounting Holes	<input type="checkbox"/>															
Removable Channels	<input type="checkbox"/>															
Vertical Tube Orientation	<input type="checkbox"/>															
Integral Drain Pan	<input type="checkbox"/>															
Lifting Lugs (Welded)	<input type="checkbox"/>															
Lifting Lugs (Bolted)	<input type="checkbox"/>															
Copper Ferrules	<input type="checkbox"/>															